

WARP SPEED® »

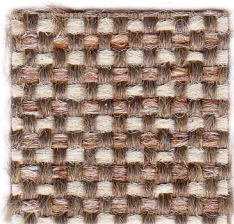
IN STOCK
for quick delivery!

Sherpa & Shire

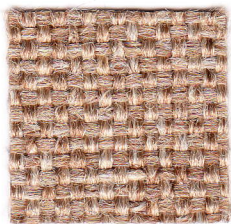
UPHOLSTERY FABRIC

100% Polyolefin

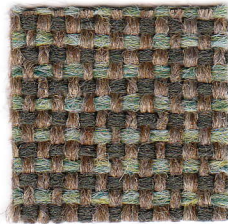
*Covered by a Limited Lifetime
Performance warranty.*



SHIRE
SESAME



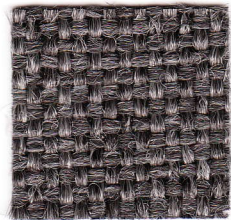
SHERPA
BROWN HAZE



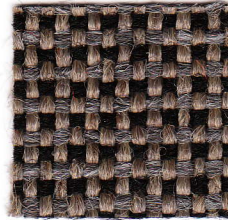
SHIRE
PATINA



SHIRE
HOPSACK



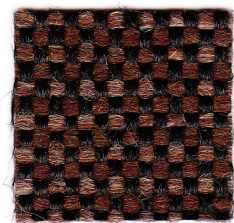
SHERPA
GREY HEATHER



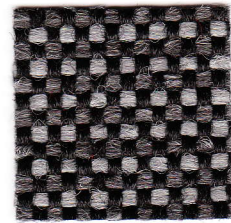
SHIRE
FOSSIL



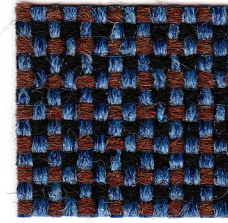
SHIRE
MARIGOLD



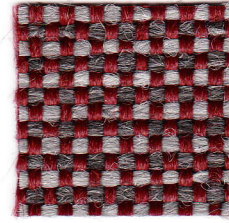
SHIRE
ESPRESSO



SHIRE
BLACK MARBLE



SHIRE
TITAN BLUE



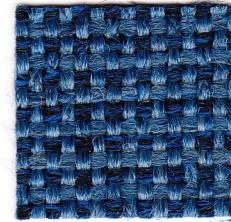
SHIRE
ASCOT



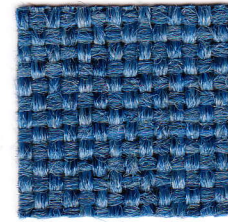
SHIRE
BRICKTOWN



SHIRE
INK



SHIRE
COMMODORE



SHERPA
ACADEMY



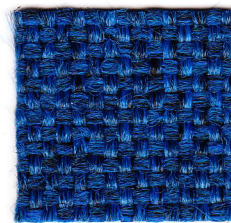
SHERPA
MAROON



SHERPA
AUTUMN



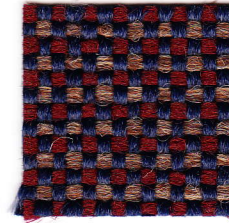
SHERPA
NAVY



SHERPA
ROYAL



SHERPA
INDIGO



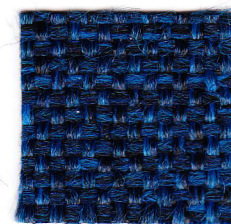
SHIRE
COUNTRY



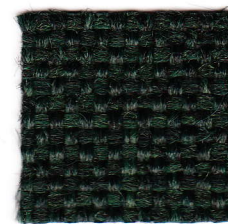
SHIRE
RED ROSE



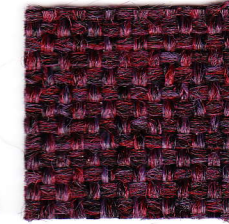
SHERPA
BLACK



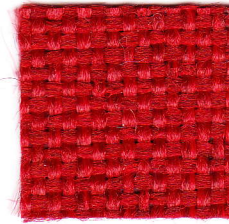
SHERPA
DARK BLUE



SHERPA
BILLIARD

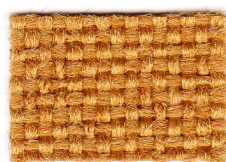


SHERPA
GRAPE



SHERPA
SCARLET

Items on this side of the card are not in the Warp Speed program and are subject to standard delivery terms.



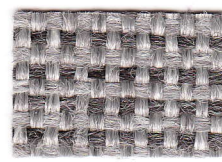
Sherpa Amber



Shire Grassland



Shire Pine



Shire Greystone



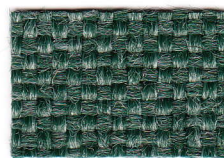
Sherpa Grey Mix



Shire Nectar



Shire Heath



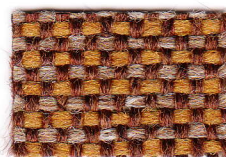
Sherpa Jade



Shire Aqueduct



Sherpa Gargoyle



Shire Acorn (New!)



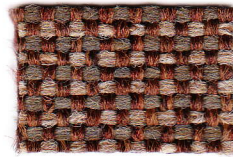
Shire Steel Blue



Sherpa Hunter



Sherpa Moss



Shire Koala (New!)



Shire Tigerlily



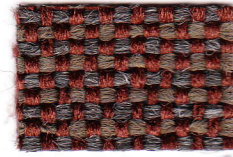
Sherpa Denim



Sherpa Ivy League



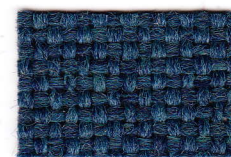
Shire Pesto



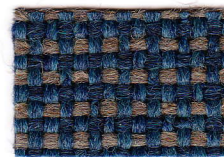
Shire Oxford



Sherpa Sparkler



Sherpa Hudson Bay



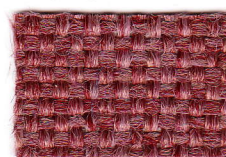
Shire Tuscan Blue



Shire Garden



Shire Bison (New!)



Sherpa Mauve



Shire Mariner



Shire Cordon Bleu



Shire Aristocrat



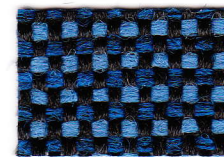
Shire Sierra Blue (New!)



Shire Black Cherry



Shire Lobelia



Shire Midnight



Sherpa Rosewood



Shire Root Beer (New!)



Sherpa Garnet



Shire Grey Litac



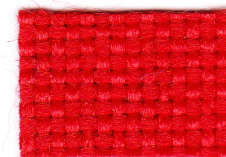
Sherpa Special Blue



Sherpa Newport



Sherpa Clove (New!)



Sherpa Cardinal



Sherpa Viola



Sherpa Purple Velvet



Sherpa Concord



Sherpa Mahogany

Sherpa & Shire

UPHOLSTERY FABRIC

LL* Pattern is covered by a limited lifetime performance warranty. Contact your sales representative for written warranty terms and conditions.

TECHNICAL INFORMATION

Fiber: 100% Polyolefin

Backing | Finish: Acrylic

A Abrasion Resistance: 250,000 double rubs (wire screen)

Weight: 16.0 ounces per linear yard (± 1 oz.); 494 g/m

Width: 54" (137-140 cm)

Repeat: None (Pattern is woven up the roll and suitable for railroading)

☼ Lightfastness: 400 Hours, Class 5

☘ Colorfastness: Wet - Class 5 | Dry - Class 5

★ Seam Slippage: Warp - 91 lbs | Fill - 95 lbs.

Cleaning Instructions: WS - For water-based stains, use mild detergent foam or upholstery shampoo. For oil based stains, spot clean fabric with a dry cleaning solvent, being sure to test area first.

🔥 Flame Resistance: California Technical Bulletin 117, Section E; CS-191-53, Class 1; BIFMA X5.7-1991; UFAC, Class 1; B. S. 5852 Part 1: 1979 Ignition Source 0, smoldering cigarette.

Fabrics by Absecon Mills, Inc. Fabric performance symbols indicate that a fabric performs to commercial furniture manufacturing standards and passes all applicable testing as specified by the Association for Contract Textiles (ACT).

05/2009 | For additional cards or memo samples:
email samples@aanddstyle.com



CHURCH



CORPORATE



HEALTHCARE



HOSPITALITY



INSTITUTION



THEATER



Absecon Mills is focused on being a responsible corporate entity and we are continually striving to find ways to help preserve our environment, increase energy efficiency and reduce waste. Our mode of manufacturing is specifically designed to prevent damage to the environment. Our products are woven using wind power and many are constructed with polypropylene (a by-product of gasoline manufacturing, utilizing post-industrial waste) and recycled polyester, which helps keep post-consumer waste in the material stream and out of landfills. Absecon offers finishes that use ten times less fluorocarbons than conventional finishes and are SCS Indoor Advantage Gold certified. We participate in a fabric recycling program and work hard to lessen our footprint on the environment. For more information on our green initiatives, please visit www.absecon.com.



WOVEN WITH
WIND POWER



The logo for Absecon Mills, Inc. features the word "ABSECON" in a stylized, multi-colored font (blue, green, yellow, and red) above a yellow square containing a white spiral design.

ABSECON

LIMITED LIFETIME WARRANTY
Effective 10 September 2004

Absecon Mills, Inc. warrants Sherpa and Shire for the life of the fabric, commencing upon delivery, under the terms stated herein. The fabric is warranted against the complete deterioration of its structure in a particular area, provided the fabric is properly installed and maintained. This warranty is valid only when used in accordance with the product's intended use, and excludes damage caused by circumstances that do not constitute normal wear, e.g., cuts, tears, pulls, burns or damage resulting from unreasonable use or abnormal conditions.

This warranty does not apply to damage caused by any of the following: mistreatment, misuse, use of improper cleaning methods or agents, improper installation, improper maintenance, fire, chemicals, products not normally found in the home or in general commercial use, or damage caused by excessive, direct or indirect sun exposure and ultraviolet light.

This warranty applies only to the original purchaser and consequential or incidental damages are expressly excluded. Absecon Mills, Inc. will only be responsible for replacing or repairing the affected areas of the fabric.

Absecon makes no other warranty, express or implied, and no other representative has the authority to make representation, promise or agreement regarding this warranty except as stated herein. Warranty is limited to the purchase price of the fabric only.

The fabrics covered under this warranty comprise the color lines of all Sherpa and Shire products.